

Congress program  
Saturday, November 21, 2009

08:00 **Opening Registration**

09:00 **Poster Session:**  
Let's talk about Non-Hematopoietic Stem Cells (NHSCs)  
report on your experiences and ask the experts for support

10:30–11:00 Coffee break/industrial exhibition

**SECTION IV: CLINICAL APPLICATIONS OF STEM CELLS**

Chair: H. Northhoff, R. Handgretinger

11:00 **G. Steinberg** (Stanford, CA/U.S.A.)  
Stem Cell Therapy for Stroke

11:45 **K. Le Blanc** (Stockholm/Sweden)  
MSC in the treatment of GvHD

12:35 **E. Chavakis** (Frankfurt/Main, Germany)  
Neovascularization by progenitor cells

13:15–14:15 Lunch/industrial exhibition

14:15 **T. Tonn** (Dresden/Germany)  
Clinical application of NHSC for the treatment of  
myocardial infarction

14:45 **M. van Griensven** (Vienna/Austria)  
Bone tissue engineering: from bench to bedside

15:15 **I. Müller** (Tübingen/Germany)  
Clinical potential of MSC in neurometabolic diseases

16:00 **Farewell** H. Northhoff (Tübingen/Germany)

Registration

**REGISTRATION INFORMATION**

**Reduced early registration rate**  
(registration and payment on or before August 31, 2009): **70.– €**

**Regular registration rate**  
(registration and payment August 31, 2009): **100.– €**

**Registration rate includes:**

- welcome reception
- lectures
- program materials
- coffee breaks, refreshments
- lunches

Registration rate does not include the gala dinner.  
No refund for cancellations received after October 15, 2009.

You have two options for payment:

1. **transfer to our bank account**  
(BW-Bank AG Tübingen/Germany): in Euro €  
IBAN–Nr. DE.68641200301208075000  
Swift Code: bwbkde6s641  
Please add : “D.33.03128, congress Nov 20–21, 2009 +  
your name”  
**inside Germany:** Konto–Nr. 1 208 075 00,  
BLZ 641 200 30, BW–Bank AG Tübingen  
Verwendungszweck: “D.33.03128, congress  
Nov 20–21, 2009 + your name”  
  
or
2. **check payment** (made payable to: IKET - University of  
Tübingen): in Euro € funds  
Please add: Please add : “D.33.03128,  
congress Nov 20–21, 2009 + your name

In any case please printout the Registration Form (PDF  
online available: [www.msc-tuebingen.de](http://www.msc-tuebingen.de)) and fax it along  
with your payment to: Dr. Richard Schäfer – IKET,  
+49 / 7071-29-5240

**ACCOMMODATION**

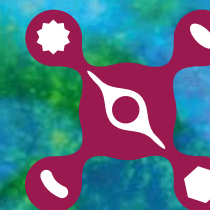
Selection of hotels in Tübingen:

Hotel Krone Tübingen \*\*\*\*\*: [www.krone-tuebingen.de](http://www.krone-tuebingen.de)  
Hotel Domizil \*\*\*\*\*: [www.hotel-domizil.de](http://www.hotel-domizil.de)  
Landhotel Hirsch \*\*\*\*\*: [www.landhotel-hirsch-bebenhausen.de](http://www.landhotel-hirsch-bebenhausen.de)  
Hotel Hospiz \*\*\*\*\*: [www.hotel-hospiz.de](http://www.hotel-hospiz.de)  
Hotel am Schloss \*\*\*\*\*: [www.hotelamschloss.de](http://www.hotelamschloss.de)  
Hotel am Bad \*\*\*\*\*: [www.hotel-am-bad.de](http://www.hotel-am-bad.de)  
Hotel-Restaurant Meteora: [www.hotel-meteora.de](http://www.hotel-meteora.de)  
Gasthof Sonne: [www.cityinfonetz.de/tuebingen/hotel/  
gasthof-sonne](http://www.cityinfonetz.de/tuebingen/hotel/gasthof-sonne)

**SPEAKERS**

K. Bieback (Mannheim, Germany)  
E. Chavakis (Frankfurt/M., Germany)  
F. Dazzi (London, U.K.)  
M. Dominici (Modena, Italy)  
W.M. Franz (Munich, Germany)  
K. Le Blanc (Stockholm, Sweden)  
I. Müller (Tübingen, Germany)  
M. Ott (Hannover, Germany)  
D.G. Phinney (New Orleans, LA, U.S.A.)  
J. Polo (Boston, MA, U.S.A.)  
P. Rameshwar (Newark, NJ, U.S.A.)  
M. Ratajczak (Louisville, U.S.A.)  
L. Sensebé (Tours, France)  
G. Steinberg (Stanford, CA, U.S.A.)  
D. Taylor (Minneapolis, MN, U.S.A.)  
T. Tonn (Dresden, Germany)  
M. van Griensven (Vienna, Austria)

**New: Poster  
Presentations!**  
Present your  
poster and ask  
the expert



**3<sup>rd</sup> Congress  
on Non Hematopoietic Stem Cells  
Tübingen | 20–21 November 2009**

Proceedings in basic research and applications of  
non hematopoietic stem cells

[www.msc-tuebingen.de](http://www.msc-tuebingen.de)



## Congress program

### LOCATION

Lecture Room of the Department of Paediatric Hematology/  
Oncology, University Hospital, Tübingen  
Hoppe-Seyler-Straße 1  
72076 Tübingen / Germany

### CONGRESS PRESIDENTS

H. Northoff, MD (Tübingen / Germany)  
R. Handgretinger, MD (Tübingen / Germany)

### SCIENTIFIC BOARD

W. Aicher, PhD (Tübingen, Germany)  
K. Bieback, PhD (Mannheim, Germany)  
C. Claussen, MD (Tübingen, Germany)  
R. Handgretinger, MD (Tübingen, Germany)  
H. Klüter, MD (Mannheim, Germany)  
K. Kohler, PhD (Tübingen, Germany)  
I. Müller, MD, PhD (Tübingen, Germany)  
H. Northoff, MD (Tübingen, Germany)  
R. Schäfer, MD (Tübingen, Germany)  
H. Schrezenmeier (Ulm, Germany)  
E. Seifried, MD (Frankfurt/M., Germany)  
T. Skutella, MD (Tübingen, Germany),  
A. Stenzl, MD (Tübingen, Germany)

### ONLINE INFORMATION

[www.msc-tuebingen.de](http://www.msc-tuebingen.de)

### CONGRESS ORGANIZATION

R. Schäfer, MD  
Head Mesenchymal Stem Cell Laboratory  
Institute of Clinical and Experimental Transfusion Medicine  
(IKET)  
Zentrum für Klinische Transfusionsmedizin gGmbH (ZKT)  
Otfried-Müller-Str. 4/1  
72076 Tübingen / Germany  
Tel. +49-7071-29-81665  
FAX +49-7071-29-5240  
Tel. +49-7071-29-81665  
Fax +49-7071-29-5240  
[richard.schaefer@med.uni-tuebingen.de](mailto:richard.schaefer@med.uni-tuebingen.de)

in cooperation with



### CERTIFICATION

This congress has been certified with 12 CME credit points.

### POSTER PRESENTATION

Posters are highly welcomed. Please submit your posters in the following formats: .ppt, .pdf or .tif. Please use the link "Poster Submission" on the website ([www.msc-tuebingen.de](http://www.msc-tuebingen.de)). Deadline for the poster submission is 15 September 2009. Besides **conventional scientific posters** presenting complete data sets we encourage the presentation of "**work in progress posters**" referring to problems and open questions in your stem cell projects. In such "WIP-posters", open questions or problems which you would like to discuss with other colleagues should be highlighted. In order to promote the scientific exchange and to overcome local limitations, we hereby like to offer the opportunity to discuss the poster with experts in the field as well as with other interested colleagues. Accepted posters can be posted from Friday, 20 November until Saturday, 21 November, 08:30 and will be presented and discussed at a special poster session on Saturday, 21 November from 09:00 to 10:30.

## Congress program Friday, November 20, 2009

08:00 **Opening Registration**

09:00 **Welcome addresses**

H. Northoff (Tübingen/Germany)  
R. Handgretinger (Tübingen/Germany)  
E. Seifried (Frankfurt/M./Germany)

### SECTION I: CHARACTERIZATION OF STEM/ PROGENITOR CELLS Chair: K.Bieback, R. Schäfer

09:15 **M. Ratajczak** (Louisville, KY/U.S.A.)

Very small embryonic like (VSEL) stem cells in adult tissues – physiological and pathological implications

10:00 **J. Polo** (Boston, MA, U.S.A.)

Plasticity and re-programming of cells

10:45–11:15 Coffee break/industrial exhibition

11:15 **D.G. Phinney** (New Orleans, LA/U.S.A.)

Functional Heterogeneity of MSC Populations:  
Implications for Therapy

12:00 **W.M. Franz** (Munich, Germany)

Cardiac progenitor cells

12:45 **K. Bieback** (Mannheim/Germany)

Characterization of CB-derived EPCs and their homing to sites of tumor angiogenesis

13:30–14:15 Lunch/industrial exhibition

### Main Sponsors:



## Congress program Friday, November 20, 2009

### SECTION II: FUNCTIONAL PROPERTIES OF STEM CELLS

Chair: R. Henschler, W. Aicher

14:15 **P. Rameshwar** (Newark, NJ/U.S.A.)

Immunomodulation by NHSC

15:00 **D. Taylor** (Minneapolis, MN/U.S.A.)

Cardiac regeneration by NHSC

15:45 **M. Ott** (Hannover, Germany)

The potential and the current limitations of stem cells for the treatment of liver diseases

16:15–16:45 Coffee break/industrial exhibition

### SECTION III: CHANCES AND RISKS OF STEM CELL THERAPIES Chair: I. Müller, K. Kohler

16:45 **L. Sensebé** (Tours/France)

Clinical grade MSC and aneuploidy: senescence without transformation

17:15 **F. Dazzi** (London/U.K.)

MSCs and immune tolerance

18:00 **M. Dominici** (Modena/Italy)

Preserving osteoblast stem cell niche by bone and marrow cross-talks

20:00 Gala Dinner (optional) – opening 19:30 (Kelter/Tübingen)